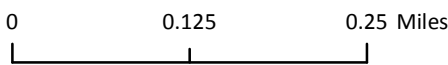
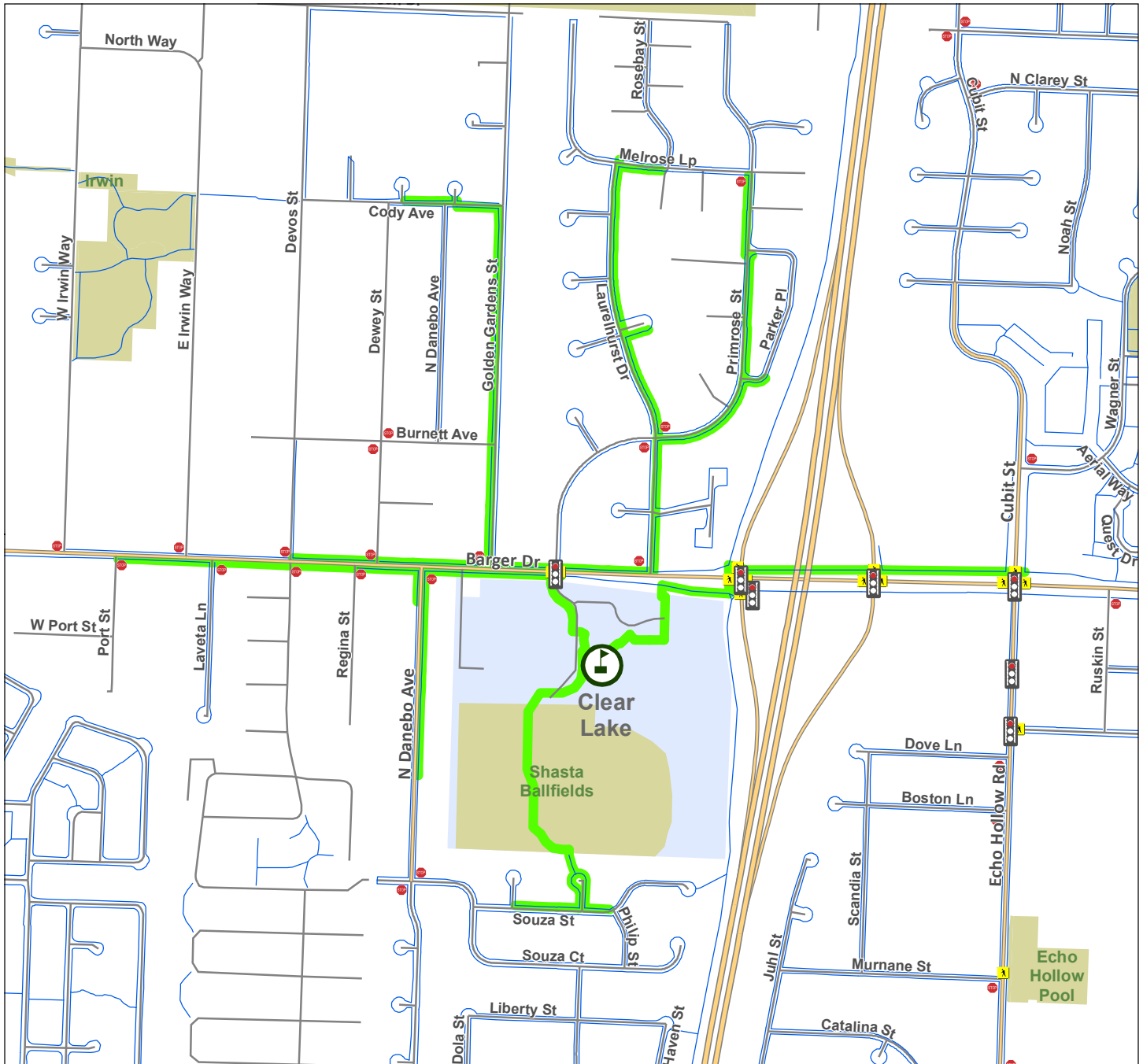



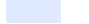







Clear Lake Walking Routes



Legend

-  Recommended Route
-  Sidewalks / Pedways
-  Park
-  School Campus
-  Stoplight
-  Stop Sign
-  Marked Crosswalks

What are recommended routes?

Recommended routes are based on where children live, distance to school, and parent-rated comfort and safety. This map shows the pedestrian network within a general 1/4-mile of school vicinity.

These routes are for planning purposes only. You should obey all signs or notices regarding your route. Parents should always walk their child's routes themselves to verify actual conditions.



September, 2011

SRTS Contact: Nicole Zwink,
(541) 689-0512 x2110
nicole.zwink@bethel.k12.or.us

